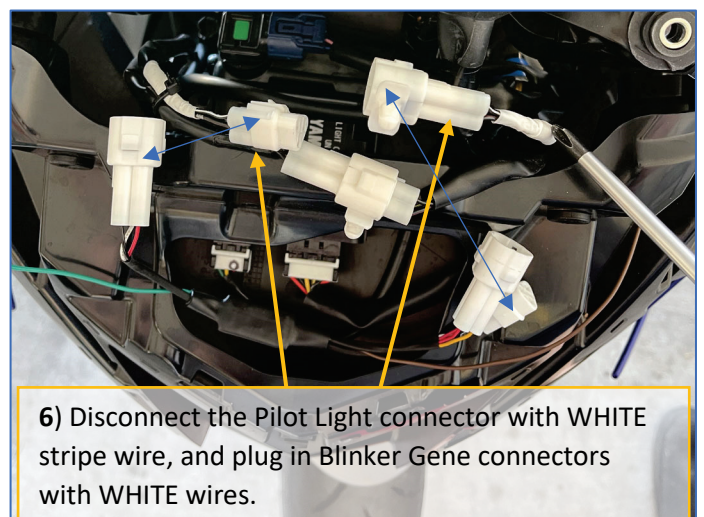
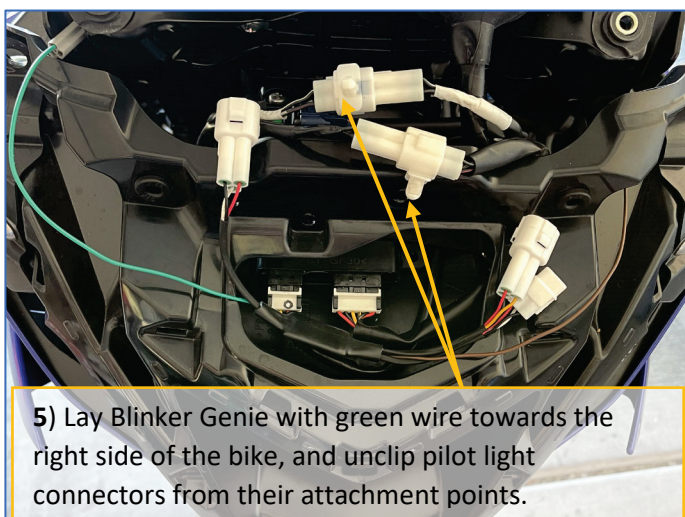
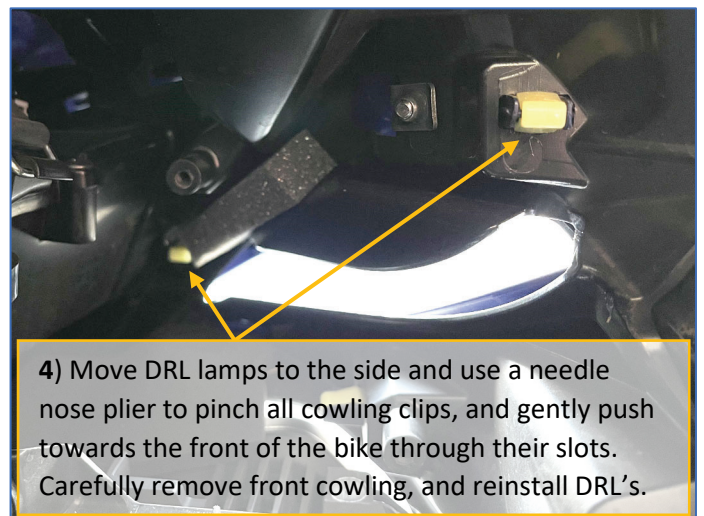
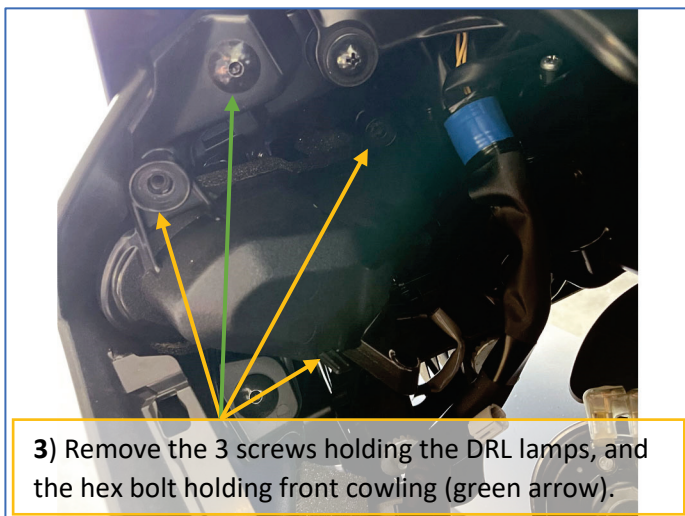
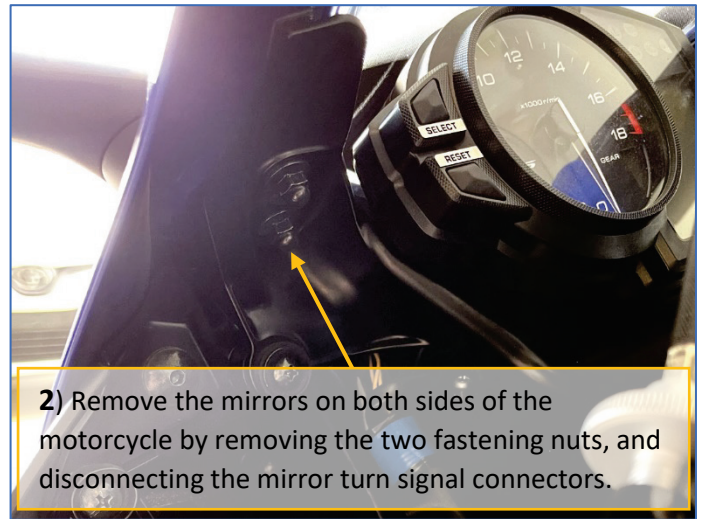
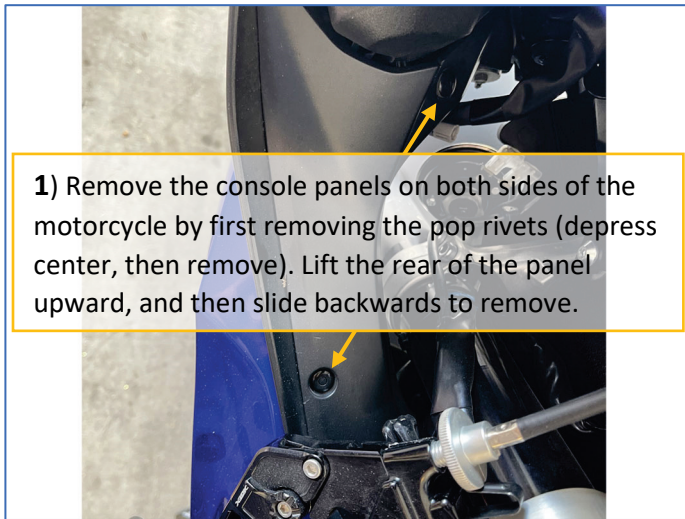




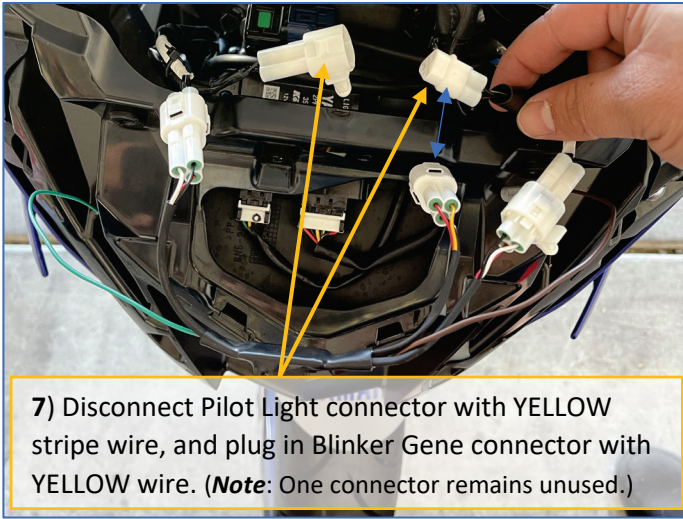
CUSTOMLED 2017+ YZF-R6 Blinker Genie

Illustrated Installation Instructions

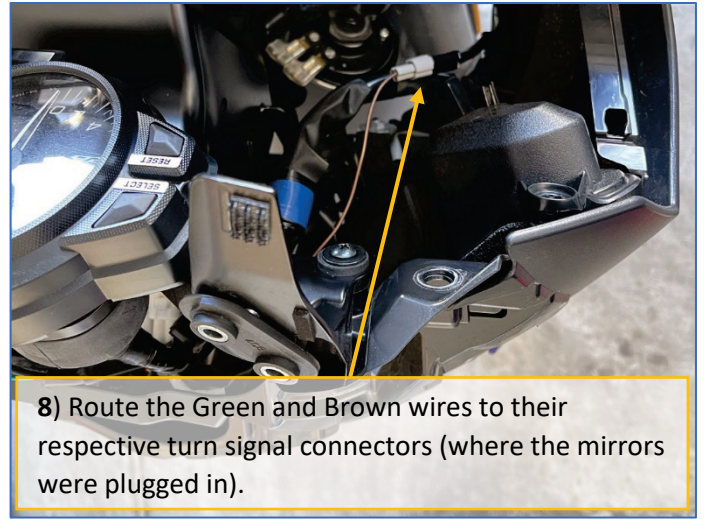
This 100% plug-and-play kit allows for run and turn operation of the OEM DRL pilot light assemblies 😊



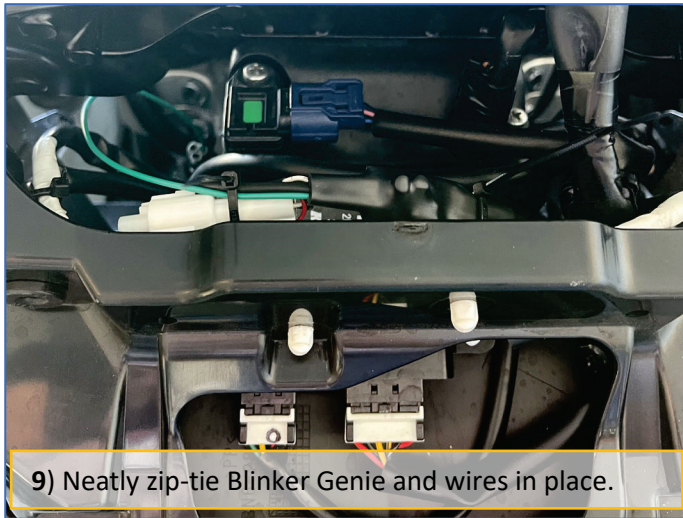
(continued on other side)



7) Disconnect Pilot Light connector with YELLOW stripe wire, and plug in Blinker Genie connector with YELLOW wire. (**Note:** One connector remains unused.)



8) Route the Green and Brown wires to their respective turn signal connectors (where the mirrors were plugged in).



9) Neatly zip-tie Blinker Genie and wires in place.

10) Reinstall front cowling assembly.

11) Reinstall mirrors **or** install mirror block-offs to support windscreen properly. If you have also purchased the turn signal Y-splitters, install them on the turn signal connectors to attach the mirror lamps AND the Blinker Genie brown and green wires.

12) Reinstall the left and right console covers.

Thank you for choosing Custom LED, and supporting USA manufacturing. Please help spread the word! You can share Video of this product in action on **YouTube**, and share your pre and post-install pictures on **Instagram**. Be sure to tag us **@Custom_LED_LLC** in the pictures so they will appear on our website Instagram feed!